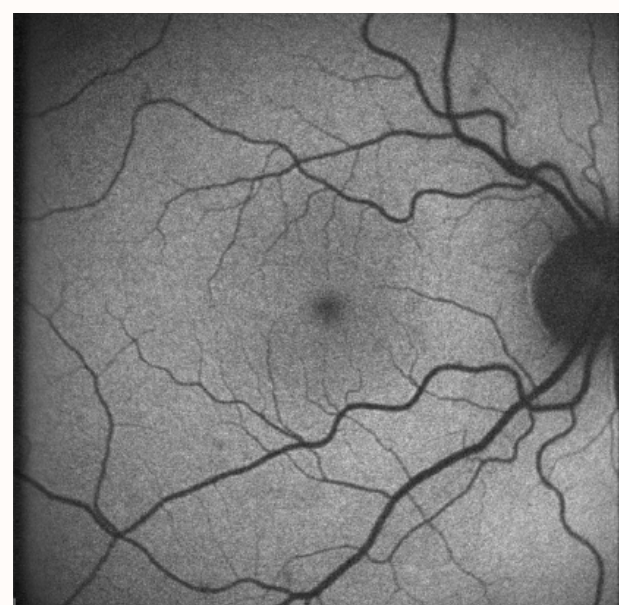
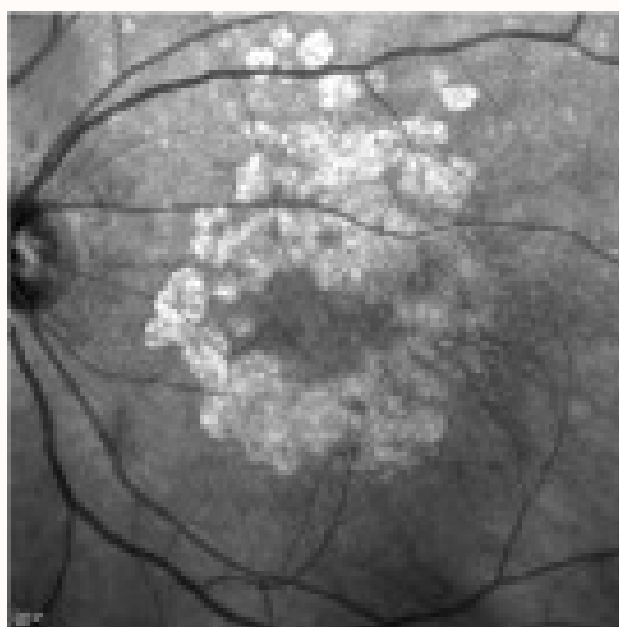


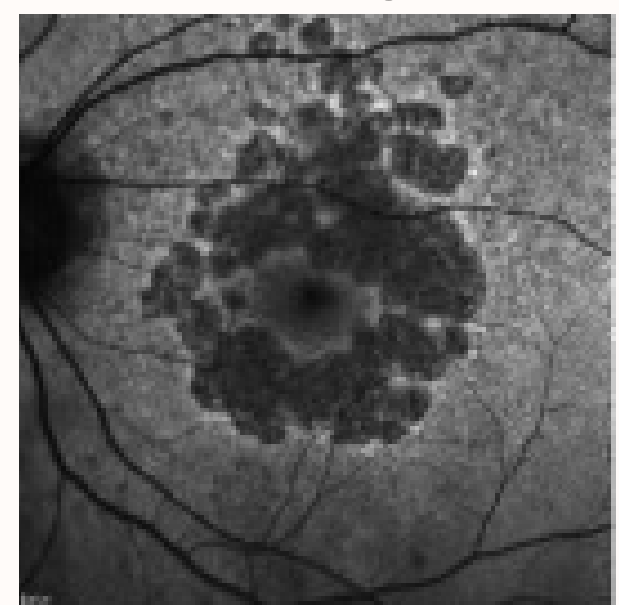
In clinical trials, a third of patients experienced a slowing of disease (GA) progression.



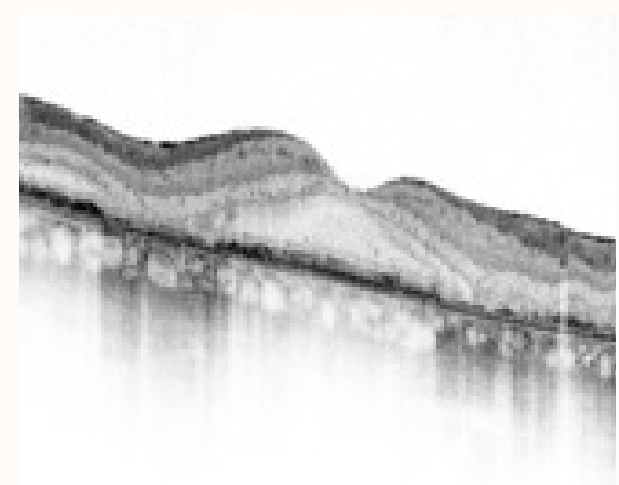
Normal



Early



Late



OCT

What is GA?

Geographic atrophy (GA) is an advanced form of age-related macular degeneration (AMD) that can lead to **progressive and irreversible vision loss.**

One cause of GA could be due to the overactivation of your immune system.

This overactivation can cause death of healthy light sensitive cells, leading to loss of central vision and color perception. As more cells are damaged, vision declines.

Syfovre is an injection administered once a month for life.

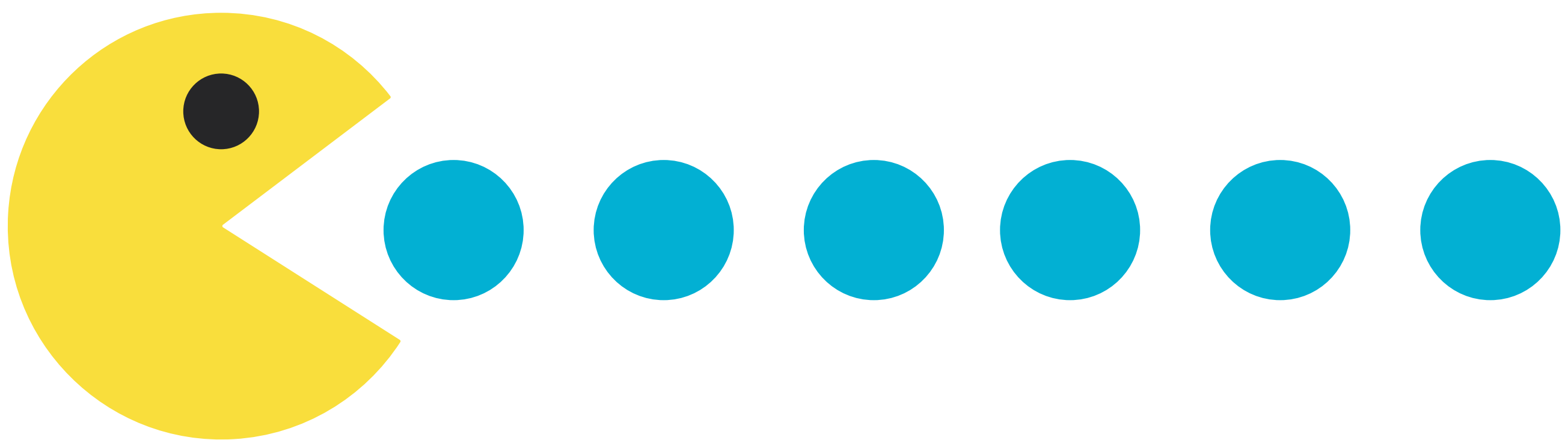


What is Syfovre?

When your immune system is overactive, it releases too much of a protein called C3. The extra C3 may kill healthy cells by mistake.

Syfovre works by binding to the extra C3 to clear the excess out, which potentially stabilizes the GA.

It's important to know that GA cannot be cured, and any damage from lesion growth cannot be reversed with treatment.



Syfovre binds to (eats) the extra C3 proteins.

Roughly 12% of patients developed wet-AMD.